



## COMPANY PROFILE

Planning and  
Resource Management

Geotechnical Engineering

Fire Engineering

Structural and Civil Engineering

Mechanical and Electrical Engineering

**bcdgroup.nz**

**0508 BCD GROUP**







## Table of Contents

Who we are	04	Lakewood	15
Why choose us	05	Kmart	16
What we do	06	Pacific Coast Apartments	17
What we do	07	Te Awamutu Library	18
Meet the team	08	The Palms Apartments	19
Meet the team	09	Genesis Energy	20
Meet the team	10	Excelsa	21
Meet the team	11	Oceanview Apartments	22
Parkhaven	12	Mezz Box	23
Hamilton Gardens	13	Pirongia Playground	24
Tauranga Crossing	14	NZ Rubber & Foam	25
		JACE Premices	26

# Who we are

BCD Group is a locally owned and operated consultancy specialising in providing Planning, Draughting and Geotechnical, Civil, Structural, Mechanical, Electrical and Fire Engineering consulting services throughout New Zealand. Established in 2010, BCD Group has flourished, expanding to a team of approximately 90 staff members across eight disciplines and continues to grow steadily.

We are a skillful, dynamic team that are equipped to provide a comprehensive range of services in retail, commercial, residential, hospitality, education, sport and recreation, cultural and community, industrial and manufacturing, energy, heritage and healthcare. On each and every job we bring to the table a vast amount of knowledge learnt over every growing portfolio. We take pride in providing an exceptional service to our valued clients that is unparalleled by our competitors.

We actively live and breathe through our company values on the right which all stem from the founding directors on page 8.



## **T**eam camaraderie

We are committed to fostering a culture of positive team work that is built on respect, trust, loyalty and enjoyment. We support each other's professional and personal achievements and celebrate all of our successes.



## **E**mpower our employees to be great

We are committed to empowering our team through supporting them in their development by delegating challenging tasks that they can learn and grow from. We encourage an entrepreneurial spirit that inspires our employees.



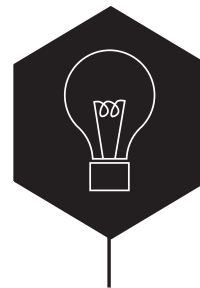
## **A**chieve the best outcomes for our clients

We are committed to providing our clients with the best possible advice, service and solutions that add value and deliver quality.



## **M**asters of our work

We are committed to continually pushing ourselves to keep learning, evolving and upskilling so we are all respected and trusted advisors in our own fields.



## **B**ring solutions not problems

We are committed to taking ownership and being leaders who always pursue the solutions to a problem.



## **C**hallenge the status-quo

We are committed to being market leaders and identifying new and better ways of doing things that are innovative, cutting edge and provide better value.



## **D**o what you say you will do

We are committed to being real and true to our word by having integrity and being accountable for our own actions and outcomes.



## Why choose us

Providing exceptional customer service and the cost-effective delivery of services is, and has been since our inception in 2010, at the core of what we do. We know that one size does not fit all so we adapt and one of our key differences is that we can readily tailor our services to client requirements. We truly believe that customer satisfaction is paramount on each and every job.

We truly value building long lasting relationships with our clients and believe that the one of the keys to this is in selecting the “right” people for each job. We are lucky to have a lot of passionate people at BCD Group with wide-ranging skillsets. Most importantly, no matter the task, we believe in early and transparent communication and ensure project team members have a clear understanding of BCD’s progress and recommendations throughout the process.



Hamilton Gardens

01

We are a team of highly skilled people combining a ‘can do’ attitude all ready to go with vision and values that are centred on providing exceptional customer service and the cost-effective delivery of services.

02

We are a company with a positive, creative, learning and challenging culture. We routinely run internal critiques of our projects and design to encourage innovation and ensure the best outcomes for our client.

03

We are passionate about engineering. Each and every job BCD Group aims to be a constructive influence on the project team so that our client gets the best value for money.

04

We take time to understand our clients’ projects early, identify potential issues and then efficiently develop effective solutions that work.

05

We can readily tailor our services to develop unique solutions for the project that meet our client’s specific needs. Efficiency in design for the optimum return for our client’s needs.

## What we do



### Planning & Resource Management

Our Planners cut through the red tape. We can assess if your project meets all required areas of compliance, assist you in applying for resource consent and liaise with council to ensure your project runs smoothly.

#### Our planning services include:

- Planning feasibility assessments and general advice
- Applications for certificates of compliance
- Preparation of all levels of resource consents
- Representation in regulatory hearings
- Resource consent condition appliance assistance
- Preparation of plan change applications
- Consultation with affected parties



### Geotechnical Engineering

Our passionate Geotechnical Engineers love solving geotechnical problems. From investigating physical and chemical properties of rock and soil to designing building foundations and retaining walls, they cover everything at and below ground level for your project.

#### Our geotechnical engineering services include:

- Consultation and review of any previous Geotechnical work undertaken
- Investigating and testing ground conditions, stability and characteristics of land
- Providing recommendations and designs for all scale of earthworks and foundations
- Design of onsite storm water and wastewater dispersal and treatment systems
- Undertake specific seismic analysis of sub soil conditions
- Liaison with Councils and other professionals



### Structural & Civil Engineering

Our expert Structural and Civil Engineers work with the design team from start to finish to ensure your proposal embraces the architectural intent, complements the order of construction and ultimately delivers cost effective outside the box solutions. By applying their technical skills in a practical manner, they ensure your project meets your specific operational needs as well as any Building Act requirements.

#### Our structural and civil engineering services include:

- Designing all kinds of buildings, structures and civil infrastructure
- Selecting appropriate construction materials
- Undertake Full seismic assessment on existing buildings and structures including non-linear time history analysis
- Assessing potential risks to the environment
- Coordination of the entire build via full 3D documentation
- Monitoring and inspecting work undertaken by contractors
- Liaising with relevant staff such as stakeholders and Council
- Project management of all design team consultants





## What we do



### Mechanical & Electrical Engineering

Our dedicated Mechanical & Electrical engineering teams provide full lifecycle project support to our clients across the Energy, Petrochemical, and Food and beverage industries. By taking the time to understand our client's projects, identifying potential issues and risks early, we can efficiently develop practical solutions that work. Our skilled and experienced team utilize the latest software, innovation and technology to ensure your project is efficient, cost-effective and tailored to your specific needs.

#### Our Mechanical & Electrical Engineering services include:

- Concept, Select, FEED and Detailed Design
- End to End Project Management
- HAZOP and Risk Assessments
- Pipe stress and vessel analysis
- Pressure vessel and heat exchanger design
- Hazardous area classification & electrical design
- Compliant Electrical designs to New Zealand Electrical Codes & Standards
- Compliant vessel and piping designs to ASME VIII, B31.3, B31.1, AS2885 and PECPR



### Fire Engineering

Our Fire Engineers focus on designing fire safety into buildings by providing practical fire engineering solutions for your project. We work alongside the design team to ensure the project complies with the latest fire engineering regulations while striving to ensure the Client's vision for the project is realised.

#### Our fire engineering services include:

- Acceptable solution designs
- Specific designs utilising the verification method and alternative solution approaches
- Building inspections to review building compliance and identifying any areas of concern, including passive fire
- Accessibility design
- Emergency lighting design

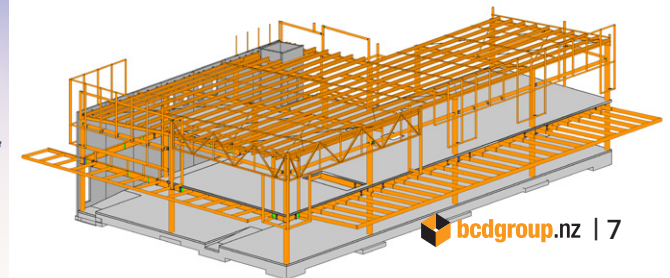
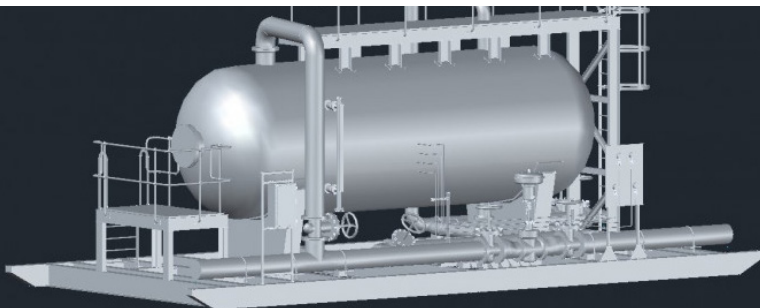


### Draughting

Our draughtsmen bring your project to life by creating accurate two-and three-dimensional representations of your project whether it be a building, road or storm water pipe. The drawings produced by our draughting team act as guides for all involved throughout the project.

#### Our draughting services include:

- PID, Isometrics and 3D Modelling using AutoCad Plant 3D, Civil 3D and Revit
- Revit and Civil 3D
- Ability to undertake BIM protocols alongside other consultants
- Preparation of photomontage marketing images





## Meet the team



**Blair Currie**  
**Managing Director**

BE Hons, CMEngNZ, CPEng 230516, IntPE(NZ)  
blair@bcdgroup.nz

Blair is the Managing Director and founder of BCD Group. He has over 17 years' experience in the Engineering industry. He has been exposed to a large variety of experience including bulk store commercial retail, industrial processing and distribution facilities, healthcare, education, retail mall precincts, and earthquake re-strengthening and sports facilities.

Blair has a passion for working within a team of likeminded industry experts so that the end product is of the highest possible quality. Blair believes that early involvement from all consultants will lead to a great design if the team starts with the end in mind.



**Jonathan Brown**  
**Director**

BSc, MNZPI  
jonathan@bcdgroup.nz

Jonathan is a Director based in the Hamilton BCD Group office with over 13 years' experience in the planning profession, in both the public and private in New Zealand and the United Kingdom. Jonathan established the planning services within BCD and has overseen its growth to now be one of the largest consultant planning teams in the Waikato. He has been exposed to a vast array of planning issues from intense inner urban environments of London through to the growth management and environmental/rural concerns in New Zealand. Jonathan is passionate about the challenges planning offers together with delivering practical results to his valued clients.



**David Hutchinson**  
**Director**

BE Hons, CMEngNZ, CPEng 238815, IntPE(NZ)  
davidh@bcdgroup.nz

David is a Director and our New Plymouth Office Manager for BCD Group. He has over 15 years' experience in the Engineering industry. Taranaki born and bred, his upbringing on a sheep and beef farm began a journey with Structural design beginning with building bridges, dams and forts.

David's leadership skills have been recognised nationally becoming a finalist in the ACENZ Future Leader Award 2011. His proactive approach to construction project management with regards to safety and efficiency has been recognised as exceptional by clients.

## Meet the team



**Mitch Mace**  
Chief Financial Officer

BMS, CA  
mitchm@bcdgroup.nz

Mitch is the Chief Financial Officer for BCD Group. He is a Chartered Accountant with a wide range of experience across several different business sectors in both New Zealand and the UK.

Being involved in a range of different businesses across the construction and development industries during trying times, has given Mitch key insights and appreciation for risk associated in these activities. Mitch is always an advocate for the no surprises approach and works closely with the senior team in company to ensure they have all the information they need to follow through with this approach.



**Sam Simpson**  
Hamilton Office Manager

MEng (Civil) 1st Class Hons, CPEng 1021483, IntPE  
sam@bcdgroup.nz

Sam is the Hamilton Office Manager of BCD Group. He is a highly motivated, professional and dedicated individual, with strong communication skills. Sam is a team player with an ability to be single minded when necessary.

Through work experience and university he developed technical knowledge, business experience, and problem solving skills, lateral thinking, strong numeracy skills, mediation and motivational skills as well as flexibility to adapt to changing environments.



**Morna Nielsen**  
Tauranga Office Manager

BE Hons (Civil)  
morna@bcdgroup.nz

Morna is the Tauranga Office Manager of BCD Group. She is a highly motivated, professional individual with strong communication skills. She thrives when working as part of a team to produce a high quality product for the client. She has worked on a variety of projects from industrial and commercial builds to education facilities and seismic strengthening.

Through work and sporting experience Morna has developed technical knowledge, problem solving skills, lateral thinking and the flexibility to adapt to changing environments.

## Meet the team



**Adam Langsford**

**Structural Engineering Manager**

BE Hons, CMEngNZ, CPEng 1020187, IntPE(NZ)

adaml@bcdgroup.nz

Adam is the Structural Engineering Manager of BCD Group with over seven years' experience in the engineering industry. He is a Chartered Professional Engineer with "structural" as his practice area.

Adam is committed to achieving efficient building solutions through early collaboration. He has designed and managed a variety of commercial, industrial and residential projects, including the multi award-winning Riverbank Mezz Box. The range of projects he has been involved in have provided him with practical understudy of construction methods as well as standing design experience working with varied structural systems and materials.



**Mike Trigger**

**Geotechnical Engineering Manager**

BSc, MEngSc, CMEngNZ, CPEng 1013669

miket@bcdgroup.nz

Mike is the Geotechnical Engineering Manager of BCD Group with over 17 years engineering experience and is also a Chartered Professional Engineer with "geotechnical" as his practice area. He has been responsible for the ground engineering of various development and infrastructure projects serving both the public and private sectors. His projects include residential buildings, large buildings, bridges, buried structures, embankment/cut slope design, retaining walls, slip repairs, earthworks and council advisory.

Mike's focus is clarity in geotechnical deliverables so that project teams can make informed decisions based on a level of analysis appropriate to the project.



**Shane Hamnett**

**Energy Manager**

shaneh@bcdgroup.nz

Shane is the Energy Manager based in our New Plymouth Office, with over 19 years' experience as an Oil, Gas and Infrastructure professional. Shane has worked in various technical, operational, commercial, project management and senior management roles throughout New Zealand and Canada. His diverse experience with both Owner/Operators and Consulting organizations provides a robust understanding of the project development lifecycle, compliance, risk, operability, HSE, and Quality requirements across a wide range of projects. Shane's an outcome-focused leader that is passionate about working with high performing teams to deliver critical and complex projects with a high standard of safety, quality and efficiency.



**Peter Dunkin**

**Fire Engineering Manager**

MIFireE, FNZFBI

peterd@bcdgroup.nz

Peter is the Fire Engineering Manager at BCD Group with over 24 years' experience in the engineering consultancy industry. Before joining BCD Group Peter worked for 15 years as a professional firefighter and was the director of his Fire Design's company working on over 18,000 projects throughout New Zealand. Peter's thorough knowledge and understanding of the NZ Building Code has allowed him to provide practical fire safety design options to property developers and owners, architects, designers and engineers throughout New Zealand, where desired design outcomes are achieved.



## Meet the team



**Lambertus Brandsma**  
Draughting Manager

NDipArch

[lambertus@bcdgroup.nz](mailto:lambertus@bcdgroup.nz)

Lambertus is the Draughting Manager of BCD Group. He has had over 17 years' experience as an architectural and structural technician.

With his knowledge of 3D BIM modelling he is able to integrate the different disciplines of a coordinated job between architects and mechanical engineers to create a complete understanding and co-ordination of the project.

Lambertus is committed to developing BCD Group as one of the leading BIM consultants within the Waikato, Bay of Plenty and Taranaki regions.



**Karly Boast**  
People & Culture Manager

Diploma Human Resources

[karlyb@bcdgroup.nz](mailto:karlyb@bcdgroup.nz)

As the People & Culture for BCD Group, Karly is passionate about building a strong value driven culture and fostering a supportive leadership structure that encourages both personal and professional development.

With 15 years of human resources and leadership experience across several different industries in NZ, Karly has both a practical and strategic approach to delivering positive people solutions that encourage employees to meet their full potential through customised individual learning and development plans and companywide engagement strategies.



**Kirsty Moran**  
Planning Team Leader

BSc, Assoc. NZPI

[kirstym@bcdgroup.nz](mailto:kirstym@bcdgroup.nz)

Kirsty is the Planning Team Leader in the Hamilton BCD Group office. She has over seven years' experience in the planning profession, working primarily in the private sector as well as for network utility providers. Kirsty has demonstrated a considerable capacity to positively and constructively respond to different regulatory/regimes and professional practices.

Kirsty is passionate about the challenges planning offers together with delivering practical results to her valued clients.



**Callum Davison**  
Civil Engineering Team Leader

BSc (Earth), BEngTech (Civil), MEngNZ

[callum.d@bcdgroup.nz](mailto:callum.d@bcdgroup.nz)

Callum is the Civil Engineering Team Leader of BCD Group with experience in both geotechnical and civil engineering consulting services. He has been involved in investigation, design and project management of a range of projects throughout the North Island.

Callum is a highly motivated, professional, dedicated individual who will always strive to provide clients with the best practical and most cost effective solutions. A natural people person, Callum has developed technical knowledge, business experience and problem solving skills, allowing him to provide good practical solutions to construction challenges.

## Our work

# Parkhaven Hamilton

Parkhaven is a luxury development that overlooks Hamilton's cityscape and green belt. BCD Group provided planning and full engineering services to this new premium mixed-use development, comprising of offices, a café and 21 high-end residential apartments and penthouses.

This is a particularly exciting development, being one of the first mixed-use developments in recent times within the CBD of Hamilton. After completion in December 2018, the office space on Level 1 also became the new home for BCD Group.





# Hamilton Gardens Various Projects

## Hamilton

BCD Group have provided geotechnical, civil and structural services associated with the construction of the themed gardens at the Hamilton Gardens site. BCD Group have worked closely with the project architect and the HCC to achieve the world class facility that has been constructed.





## Our work

# Tauranga Crossing Tauranga

Situated in an ideal location at the intersection of SH29 and SH36 in Tauriko, the Tauranga Crossing services not only the Bay Of Plenty region but also those who pass through.

BCD Group have provided structural design services to the 30,000m<sup>2</sup> GFA cinema and retail space extension of the existing shopping centre which opened in April 2019. The shopping centre development required lean design solutions and innovative thinking to ensure the client had a cost effective and functional building.



## Our work

# Lakewood Cambridge

BCD Group provided full engineering and planning services to the Lakewood project.

Situated alongside Lake Te Koutu, this new 10,000m<sup>2</sup> GFA mixed use scheme will provide a variety of residential and commercial uses and become a premier lakefront destination in the heart of Cambridge.





## Our work

# Kmart

## Hamilton, Rotorua & Bethlehem

BCD Group provided full engineering services for three new Kmart stores across the Waikato and Bay of Plenty regions.

All projects were completed on time and within budget and were successful projects for all involved.







# Pacific Coast Village

## Papamoa

The retirement village required a two-storey serviced apartment complex to offer assisted living and flexible care options to their residents. BCD provided draughting and geotechnical, civil and structural engineering services to the new build. The engineering design also incorporated supports for an on-site water supply for the buildings post-disaster. Due to the complexity of the building layout and requirements for adjustable wall layouts 3D modelling including foundation/soil interaction was undertaken.





# Te Awamutu Library

## Te Awamutu

This impressive library was a fantastic project to be involved in. BCD Group provided full engineering services to this design build collaboration. The new 1,400m<sup>2</sup> building has a space for books, magazines and DVDs as well as offices and staff facilities.

The completed design resulted in an iconic new building for the Te Awamutu community.





## Our work

# The Palms Apartments New Plymouth

The Palms on Devon Street truly showcase BCD Group's ingenuity with the use of steel Vierendeel trusses in the upper two levels. This allows the first and second levels to cantilever maximising the impressive views of Mount Taranaki and the sea.

Conveniently located near both the beach and urban areas, the apartments each feature three bedrooms, internal lifts and open plan living areas that flow to covered decking spaces with electric louvre roof and self-opening side louvres. BCD Group provided Geotechnical and Structural Engineering services to help bring this striking design off the page and to life.



# Genesis Energy

## Hamilton

The Genesis Energy building transformed a former supermarket into 7,000m<sup>2</sup> of office space for Genesis Energy and Civil defence. The challenges were repurposing the shell of the former supermarket for covered carparking and open plan mezzanine offices and linking it into the new civil defence and control design.

As the building is intended to be used as a post-disaster facility, care and consideration ensured that the structure and services will continue to operate following an unforeseeable event. Natural light enters the offices via open light wells in the centre of the former supermarket roof. BCD Group provided planning, geotechnical, civil, and structural services for the multi award-winning development.





## Our work



## Excelsa

### Papamoa

Excelsa is a cinema and shopping complex that provides the fast-growing area of Papamoa with a convenient retail and community facility. The centre currently consists of a boutique 135-seat cinema, a two-storey bar and restaurant, various eateries on the ground floor and carparking behind the building. BCD Group have provided structural engineering services to the complex which is expected to have additional stages open between March and August 2019.



## Our work

# Oceanview Apartments New Plymouth

The Oceanview Apartments epitomise luxury living on the foreshore of New Plymouth. BCD Group provided structural engineering and draughting services to the three apartments, two of which enjoy outlooks to the sea.

Ranging from 225 – 300m<sup>2</sup> in floor area, the apartments each feature an expansive open plan living area with decks on all three levels, creating an oasis on the waterfront.





## Our work

# Mezz Box

## Hamilton

Cantilevering towards the Waikato River, the Riverbank Mezz Box was a structurally challenging commercial space that successfully met the daring aspirations of both the client and architect.

The project was completed in the face of challenging site conditions as development of the neighbouring park limited direct access to build the structure in its final position. In order to complete the building in the available construction window the structure was designed to be largely built, clad, and lined on the ground before being lifted and bolted into place as a box frame.

The Mezz Box was also named the Under \$500K Winner at the 2018 Excellence in Steel Awards.





## Our work

# Pirongia Playground

## Pirongia

Completed in 2019, BCD provided Geotechnical Engineering, Civil Engineering and Draughting services to the Pirongia Playground working alongside Waipa District Council and the playground designers. Works included civil design of pavement, planting areas, playground foundations and fencing supports.

The finished playground resulted in a great asset to the Pirongia community. The project has been one of several changes planned for Pirongia that BCD are involved in, including path upgrades and new public toilets to replace the existing ones.





## Our work



# NZ Rubber & Foam

## Tauranga

With its cedar cladding and full height windows, the modern front elevation of NZ Rubber & Foam's headquarters gives a new take on industrial building design.

BCD Group provided planning, geotechnical, civil and structural engineering services to the warehouse and front office space. The client was ecstatic with the finished building and overall aesthetic.



## Our work

# JACE Premises Tauriko

BCD Group are excited to have been involved in the development of the JACE Industries premise in Tauriko, providing both structural and civil engineering services. Upon completion this large 65,000m<sup>2</sup> complex will combine fruit storage, packing and distribution services of MPAC and APAC.







# STAY IN TOUCH

Discuss your project with BCD Group today

## Hamilton Office

Level 1,  
220 Tristram Street  
Hamilton  
New Zealand  
07 839 9107

## New Plymouth Office

Level 3,  
53 Brougham Street  
New Plymouth  
New Zealand  
06 757 5051

## Tauranga Office

Level 1,  
75 Elizabeth Street  
Tauranga  
New Zealand  
07 571 0166

Or make an enquiry online at  
[bcdgroup.nz/contact](http://bcdgroup.nz/contact)

[bcdgroup.nz](http://bcdgroup.nz)  
0508 BCD GROUP

